

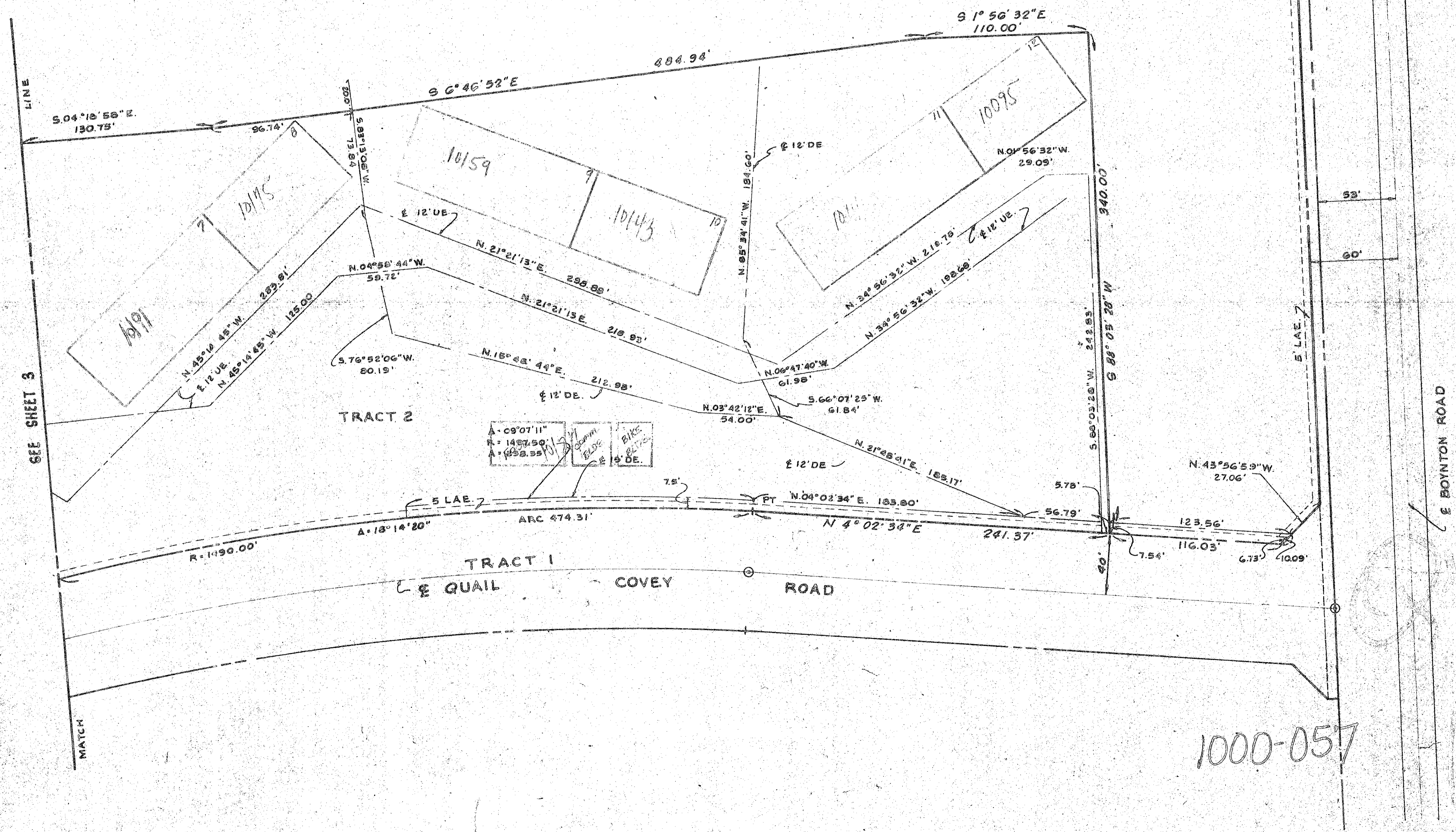
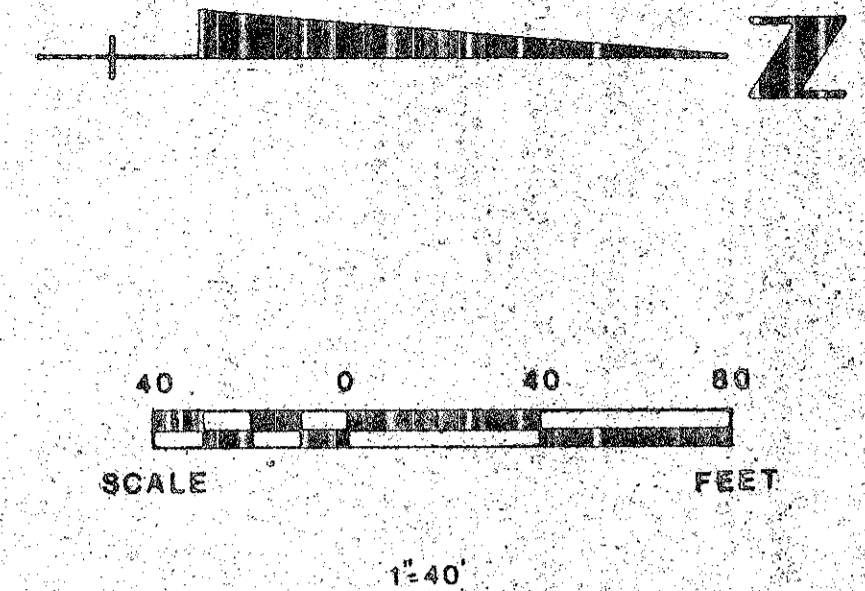
PLAT NO. 19 QUAIL RIDGE

(A PLANNED UNIT DEVELOPMENT)

IN SECTION 30 TOWNSHIP 45 SOUTH, RANGE 43 EAST
PALM BEACH COUNTY, FLORIDA, BEING A REPLAT OF
TRACTS 19, 20, 45 & 46 AND PORTIONS OF TRACTS 12, 13,
14, 21, 43, 44, 51, 52, 53, & 54 PALM BEACH FARMS COMPANY
PLAT NO. 8 SEC. 30 T-45-S, R-43-E PLAT BOOK 5 PAGE
73 AND OTHER LANDS

IN 4 SHEETS SHEET NO. 4

183



1000-057